

2006-2007
FOUNDATION REPORT



...we can be the better
world we wish for.

-Kobi Yamada

Foundation Objectives...

To raise public awareness about child welfare concerns.

To raise funds within our community to support the work of Family & Children's Services with children and youth of the Waterloo Region who are at risk of harm.

To support the Agency's vision and mission statement.

family & children's services
of the waterloo region

FOUNDATION

established 1991

www.fcsfoundation.ca

Dear Friends,

As I come to the end of my term as President of the Foundation Board, I would like to reflect on the accomplishments of the Foundation over this last year. It's hard to believe that a year has actually passed since our last report to the community—and what a year it's been! Today, I am pleased to issue the 06/07 Foundation Report to the community. Inside you will see the highlights of the tremendous support we received including:

- The introduction of the Hot Shots Street Hockey Tournament. Inspired by a scholarship youth, this dynamic event raised more than \$28,000 to provide recreational opportunities for children and youth in its inaugural year. This great outcome can certainly be attributed to the many participants, sponsors, and of course, the strong support of The Record. I would be remiss if I did not give a special word of thanks to Norm Casarin for his leadership role in this project, and we look forward to his continued contributions to the work of the Foundation as he joins our Board of Directors for the upcoming term.
- The direct support of FCS staff who give not only of their time and compassion, but financially as well. Since 2002, staff giving has increased an incredible 416%. I continue to be so proud of these professionals who work with the families and the at risk youth of our community to assist them in circumstances that most of us wouldn't have any idea how to resolve. But they do, and we thank them for their tireless and ongoing efforts.
- The implementation of the Small Steps Giant Leaps reading program for children in the care of the agency. Too often we find that the children in care have fallen behind in their schooling because of the difficult circumstances they are in. During the summer of 2006, the Agency was able to provide all sorts of appropriate reading material for the kids and to package these books into knap-sacks for the kids to take home or carry to school. This program has made a difference and was funded by the generous proceeds from the 2006 Cowan Charity Classic golf tournament. The fundamental need this program is addressing for our young people was a deciding factor for the Volunteer Impact Award judges when they awarded Cowan the 2007 Corporate Community Award.

- And as always, the centrepiece of our fundraising efforts continues to be the CHYM FM Tree of Hope campaign, in which we once again met our goal of raising \$250,000! New this year was our Tree of Hope raffle that included an exciting prize of a cruise for two to Hawaii courtesy of Marlin Travel. Also introduced was the Adopt A Youth Program, which found a personal champion in CHYM FM's, Tara Connors.

Even with these achievements over the past year, we are reminded that the need is still very real. In pockets around our region children continue to be trapped in dire social situations from which there seems little escape. Our young people are dealing with more complex challenges than ever before—gangs, violence, and drugs. Add in the unique vulnerability that comes from growing up in a family affected by abuse or neglect, and our young people are fighting for their lives just to make it through the school system.

Too many of our young people are being affected by violence and neglect. This year the Agency will care for over 500 children and will work with another 1200 families in the community. These children need inclusion not exclusion—and the recreation and educational opportunities funded through the Foundation is doing just that. Our dream is to ensure that our young people who want to get involved are given the right opportunities. We have found that if they are given the chance, they can change their circumstances showing the way for other young people.

Nothing makes us prouder than to know that our youth are accepting this challenge. This year four new youth will accept post secondary scholarships bringing the total to eighteen. That is simply amazing!

We dedicate this report to these young people who continue to teach us more about courage and strength than anyone else.

One by One they are making a difference.

Sincerely,



Rick Purdy
President, FCS Foundation

President's Letter to our Supporters



Foundation Executive Director's Report

It is indeed a pleasure to report on the very successful operations of the Foundation during the past year – the fifteenth year of consistent growth since its creation. During this period of time a total of \$2.6 million has been raised by the Foundation within the community to support the work and services of the Agency with children and youth at risk of harm.

In 2006/07 assets under administration grew to \$1,175,966. A record \$409,771 was raised; and grants made by the Foundation totaled \$381,067 – a 117% increase over the year before. The stories of donors who contributed so generously and the wide variety of grants made to support the children and youth of our community are detailed throughout this report.

This success is a result of an ever increasing number of friend and fundraising events held each year from our signature Tree of Hope Campaign each December to the first annual Hot Shots Street Hockey Tournament in May, Couch and Company Golf Tournament in July, and other events throughout the year. These events would not be possible without the tremendous efforts of volunteers and agency staff. Thank you to all of the donors, sponsors, volunteers and staff who contribute so much to the lives of children and youth of Waterloo Region through their support of our Foundation.



J. Phillips

James C. Phillips
Foundation Executive Director

Financial Summary

FAMILY & CHILDREN'S SERVICES FOUNDATION

Balance Sheet as at March 31, 2007

Assets		Liabilities & Equity	
Cash	\$245,056	Accounts Payable	\$12,068
Accounts Receivable	70	Specified Gift Fund	305,258
Investments	930,840	Community Gift Fund	663,711
		Program Specific Funds	120,009
		Scholarship Fund	26,553
		Better Futures Fund	48,367
	<u>\$1,175,966</u>		<u>\$1,175,966</u>

Table of Contents

MESSAGE FROM PRESIDENT	1
EXECUTIVE DIRECTOR'S REPORT	2
FINANCIAL SUMMARY	2
FOUNDATION FAMILY MEMBERS	3
HOT SHOTS TOURNAMENT	3
FOUNDATION FUNDS	4
TREE OF HOPE	5-6
ADOPT A FAMILY	7-8
FOUNDATION GRANTS	9
GIFTS IN KIND	10
GRADUATING CLASS OF 2007	10
IN MEMORY GIFTS	11
THE FOUNDATION	12

STATEMENT OF REVENUE AND EXPENDITURES

For the Year Ended March 31, 2007

Revenue		Expenditures	
Donations	\$380,049	Grants to Agency	\$381,067
Investment Income	52,584	Operating Expense	22,862
	<u>\$432,633</u>		<u>403,929</u>
		Net Increase in Equity	<u>\$28,704</u>

(Extracted from Financial Statements audited by KPMG Chartered Accountants)
Details for other programs are contained in the Audited Financial Statements

Foundation Family Members

Donors over 15,000

Cowan Insurance Brokers
 Frank Cowan Foundation
 The Kitchener and Waterloo Community Foundation

Donors between \$10,000 - \$14,999

Anonymous (1)

Donors between \$5,000 - \$9,999

Jim and Heidemarie Balsillie
 Gore Mutual Insurance Company Foundation
 H. L. Staebler Company Limited
 Ray Robinson

Donors between \$2,500 - \$4,999

Couch & Company Ltd.
 Cowan Wright Beauchamp Ltd.
 Cunningham Lindsey Canada Limited Insurance Adjuster
 Custom Contracting Group
 Peter Cybulski
 The Economical Insurance Group
 The Equitable Life Insurance Company of Canada
 Evergreen Liquid Plant Food Ltd.
 FaithLife Financial
 Filion, Wakely, Thorup, Angeletti
 Heffner Lexus and Heffner Toyota
 ING Canada - Corporate Communications
 Lackner McLennan Insurance Ltd.
 Pilot Insurance Company
 Price Waterhouse Coopers Canada Foundation
 ProVider Transportation and Logistics
 Rae & Lipskie Investment Counsel Inc.
 Peter Ringrose
 Matthew Sheedy
 Strassburger Windows & Doors
 United Way of Cambridge and North Dumfries
 Wallenstein Feed Charitable Foundation

Hot Shots Street Hockey Tournament

presented by The Record



Scoring Goals, Assisting Kids!

What inspires more thoughts of Canadiana than a friendly game of ball hockey? The excitement of chasing the ball across pavement, the camaraderie of being with your pals, the periodic exclamation "Car!". Well, in June 2006, Waterloo Region got their sticks ready and participated in the first annual street hockey tournament, in support of sport and recreation opportunities. The fun day of light-hearted competition and pledges raised was held on the wide-open pavements of Conestoga College.

And people didn't have to play to enjoy the tournament! The afternoon included a BBQ, kid's activities, and silent auction. In its first year, this exciting event has raised over \$28,000.

Game on!

For more information, visit:
HotShotsTournament.com



Foundation Funds

The Foundation has created a number of designated funds to meet the unique needs of the children, youth, and families served by Family & Children's Services; needs not covered by government funding. The complete listing of funds can be found below. To learn more about donating your time, contributing financially or in-kind, call (519) 576-0540 and ask for the Foundation. Your gift will make a difference in the life of a child.

The *Better Futures Memorial Fund* was created in 2002 to allow children in the care of the Agency to enhance their skills and talents in areas of culture, the arts, and sports. The Fund was created in memory of three young women, Katinka Heine, Cornelia Rauter, and Martina Van Katwijk, who died as result of a tragic traffic accident in 1985.

Since its creation, four youth in care of Family & Children's Services have had opportunities to: travel to Scotland to perform with the Cambridge Girls' Choir, cultivate extraordinary talent in the area of acting, and to secure studio time to record songs based on one youth's misfortunes in childhood.

In 2005, a Better Futures plaque was unveiled in honour of the young women whose memory will live on through the 'better futures' they have inspired for vulnerable youth. The event included guests such as Myra and Peter Van Katwijk (parents of Martina), Karla and Ernst Rauter (parents of Cornelia) as well as grateful former Better Futures award recipients. The Heine Family (parents of Katinka) now live in Germany.



"Our own girls were fortunate to grow up in families that had means to support them. These children don't have those financial means", says Myra Van Katwijk. "There is comfort in knowing that even though you have lost a child, there is continuation".

Today the Better Futures Fund continues to grow and offer vulnerable children and youth opportunities that would not be possible without it. This year is an especially important year because the Better Futures Fund will award TWO young people the opportunity to build their skills and take the first steps towards a *Better Future*.

Robert F.

A high school student, Robert's marks range from 75% to 90%, comfortably securing him a position on his school's Honour Roll. In 2006, Robert was awarded Most Valuable Player for his skills in football, rugby, and basketball. In the same year, he was also awarded Junior Athlete of the Year at his high school. His peers, teachers, and workers all agree that Robert demonstrates a high level of commitment and a strong will to be an achiever in many areas of his life. They all feel strongly that he is on the fast track for an academic scholarship in keeping with his athletic ability. Robert also works part-time at the local YMCA to save for tuition.

The 2007 Better Futures Award will allow Robert to continue developing his athletic skills, thereby allowing him to continue to save money for future tuition. Way to go, Robert!

Rob L.

A former Crown Ward, Rob maintains a close connection with his foster parents and continues to live in their home. He works part-time, attends school, and plans on graduating next year. In addition to these activities, Rob has shown some promise in the area of music. He has taken two years of music lessons and has shown a keen interest and talent in guitar playing. Rob has purchased his own guitars as well as other important music equipment on his own.

Today Rob dreams of working in the music industry and has researched post secondary programs in music production. He hopes to enrol in one of these programs in 2008, however many of the programs require Rob to produce his own demo tape.

Rob hopes to use this award to do this, as well as return to music lessons. This award will also allow him to save additional dollars for college. Way to go, Rob!

Other designated funds within the Foundation:

The Children's Fund
Adoption Services Fund
Education Fund
Emergency Fund

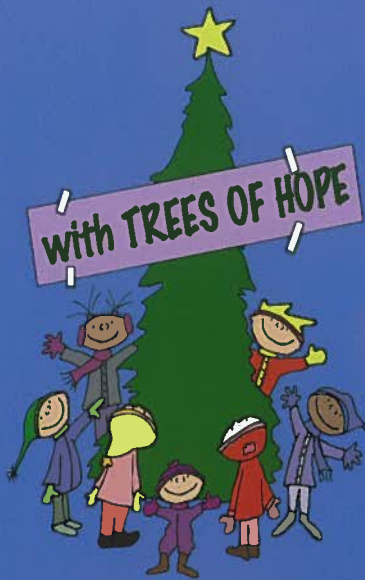
Family Support Fund
Foster Care Fund
General Endowment Fund*
Life Adventures Fund for summer camp

Moving Forward Fund
Residential Services/Group Homes Fund
Scholarship Fund
Youth Services Fund

*Contributions will be held a minimum of ten years and interest earned will be used to support the work of Family & Children's Services of the Waterloo Region

Donors between
\$1,000 - \$2,499

A&W - Fairview Park Mall
 A&W - Cambridge Centre
 A&W Conestoga Mall
 A&W - Hespeler Rd.
 Albert's Gas Station Maintenance
 Altanic Transportation
 Anonymous (1)
 ARCA Financial Group Inc.
 ATS
 Aviva Insurance Company of Canada
 Bank of Montreal - King W.
 Bruce Bennett
 Bennett Chevrolet Oldsmobile
 Cadillac (2000) Ltd.
 Bernhardt Insurance Service Ltd.
 Best Western St. Jacob's
 Country Inn
 C B Financial Planning Group
 Cambridge & North Dumfries
 Community Foundation
 Central Park Lodges
 Charcoal Steak House
 City of Kitchener
 Clintar Groundskeeping Services
 Conestoga Cold Storage
 Yvan and Lynn Couture
 Deloitte
 Durbin Motors
 Financial Horizons Group
 Giffen Lee LLP
 Brenda Hagey
 Margaret Hooper
 IKON Office Solutions
 Investment Planning Counsel
 of Canada
 IODE Preston Chapter
 Jake's Freight Systems
 Jiffy Lube
 Jim Reitzel & Associates
 K.W. Motor Carrier Alliance
 Keller and Morrison
 John Kraemer
 Kraus Carpets Ltd.
 Kwik Kopy Printing
 Lions Club of Kitchener
 Madorin Snyder
 Maple Leaf Consumer Foods Inc.
 Montana's Cookhouse Kitchener
 Sharon & Neil Parkinson
 Prestige Business Interiors Inc.
 Reuter Benefits
 Rockwell Automation Canada Inc.
 Serad Holdings Limited
 Rick Skehan
 Melody Stuetz
 Toyota Manufacturing
 Arthur and Ruth Traugott
 Trinity United Church
 Twin City Dwyer Printing Co. Ltd.
 Union Gas Limited
 United Way of Kitchener-Waterloo
 & Area
 Victoria Star Motors Inc.
 Volkswagen Waterloo
 Wagner Livock & Associates
 Waterloo & Halton Regions Joint
 Elks and Royal Purple Lodge
 Woodhouse Contracting Ltd.
 Toby Woods
 Zebra Markets



2006 CHYM FM

Deck the Walls with Trees of Hope

Each year we are delighted to see the number of locations that step forward to participate in our Deck the Walls project with the Trees of Hope initiative—and this year was no different! This fun, interactive campaign invites customers to donate a tooney to the CHYM FM Tree of Hope in exchange for a colourful paper tree on which they can write their name and have displayed at locations around the city!



Special Thanks to our friends at:

- A&W Restaurants
- Boston Pizza
- Cambridge Centre
- Country Boy
- Fairview Park Mall
- Price Chopper
- Quiznos
- Smitty's Fine Furniture
- Sobeys
- St. Jacob's Farmers Market

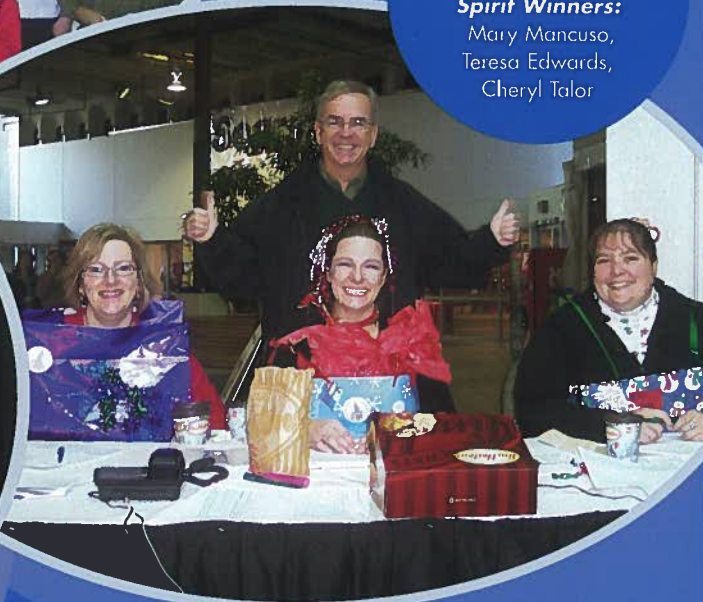


The A&W Staff on Hespeler Road were all Deck-ed out for kids this past holiday season. Thanks Folks!

Tree of Hope



This year's Call Centre Teams Spirit Award Winners - Cowan!
Pictured here, Team Spirit Winners:
 Mary Mancuso,
 Teresa Edwards,
 Cheryl Talor



Special thanks

to our Call Centre Teams who joined us at our Fairview Park Mall location to make this year's campaign a special success!

Bend-all

Cowan Insurance Group

H.L. Staebler Insurance

Jiffy Lube

Kinsmen Centre

Mennonite Savings & Credit Union

Owens Corning

Union Gas

Waterloo Public Health



Donors between \$500 - \$999

- A&W Restaurants - Victoria St. N.
- AIC Limited - CO-OP Department
- AIM Trimark
- Anonymous (1)
- Babcock & Wilcox
- Bank of Montreal
- Brian Boileau
- Ivan Bondarenko
- Boston Pizza - Gateway Park
- Boston Pizza - King St. N.
- Brandes Investment Partners & Co.
- CI Investments Inc.
- Client Transport
- Contract Survey Consultant Inc.
- Douglas Deighton
- Fintan Doyle
- Factory Flooring
- Fidelity Investments Canada Limited
- Hoss Cartage
- JDI Cleaning Systems
- Colin Kemball
- Ray Kipfer
- Koenig Painting & Decorating Ltd.
- Labatt Breweries of Canada
- Mackenzie Financial Corporation
- Norman McIntyre
- The Mennonite Foundation
- Mennonite Savings & Credit Union (Ont) Ltd.
- Optimist Club of Stanley Park
- Osso Electric
- Rick & Barb Purdy
- Ryobi Technologies Canada Inc.
- Maria Schaefer
- Swanson's Home Building Centre
- TD Canada Trust
- TD Financial Group
- Unitron Hearing - Kitchener
- Peter and Myra Van Katwijk
- Win Leader Corporation
- Yanke & Associates

Donors between
\$100 - \$499
1543516 Ontario Inc.

Vern Agnew
N. J. Allison
Maria Alvarez
Frank Anderson
Anonymous (4)
Brent Ashmore
Sharon Bach
Bryan Bain
Sue Baker
Bank of Montreal - Elmira
Greg Barratt
Dean Bast
Vicki Baulk
Craig Beaton
Gordon J. Beckenhauer
Muriel Bell
Rosemary Benbow
Lila Bender
Martin Bender
Beresford Box Company Ltd.
Paul Bergman
James Berner
Don Berrill
Greg Bewick
Bill Snyder Electric Inc.
Adele Black
David Black
Richard Booth
David Borowski
Robin Bouck
David Bowen
Tom Burns
Fardad A. Calagary
Cambridge Garden Centre
Cardinal Counselling and Mediation
Carol Baker Visage
Norman and Joy Casarin
Patricia Chambers
Phil Charlesworth
Darcy Chelhowski
Damian Chudzik
Rick Clampiit
Bettyanne Cobean
Dave Collins
Mike Collins
Colt Canada
Rick Comrie
Larry Cormier
John Couch
Maureen Cowan
Barbara Craig
D. A. Kurt Insurance Brokers Ltd.
Mary Lynn Darroch
Gordon Dearborn
Marlene Dei-Amoah
Mary Demers



Adopt A Family

This past year over 240 donors—individuals, families, friends, neighbours, workplace groups, schools, churches, service clubs, Children's sport teams, Brownies and other groups—supported 309 families and 24 youth across Waterloo Region. And another 153 families received toys through the Knights of Columbus Christmas Toy Drive. Thank you!

Started seven years ago by a few Family Service Workers who wanted to give some families on their caseloads a Merry Christmas, it's amazing to see the extraordinary way this program has grown. In 2006 the Adopt-A-Youth component was added to a wonderful public response.

INAUGURAL ADOPT A YOUTH HOLIDAY PROGRAM

Paying a hydro bill for the first time...shopping for one...balancing the demands of work and school...or not having a family to share the joys of Christmas with... The world can be a lonely place for a youth who for too many reasons, has no family to spend the holidays with. This sudden isolation adds to the anxiety of a distressing situation, and can impact negatively on that youth's self esteem and self-worth. This year the Adopt-A-Family Holiday Program included an Adopt-A-Youth component, which allowed donors to come together to support these youth during this difficult season.

We were delighted this year to include Tara Connors, half of CHYM's popular morning show George & Tara in the Morning, among this special group of supporters.

Adopt A Family Donors

Donors between \$2,500 - \$4,999

Dare Foods Limited
Woodland Christian High School

Donors between \$1,000 - \$2,499

Canada Customs and Revenue Agency
COM DEV International Ltd.
Maple Leaf Foods
Miller Thomson LLP
Pavaco Plastics
Brian J. Ruby
Schweitzer Insurance Services Inc.
St. Andrew's Hespeler Presbyterian Church
Stride Rite Canada Limited
Sunshine Montessori School
The Embassy
Tim Hortons
Marina Ward

Donors between \$500 - \$999

Altanic Transportation Inc.
Barrday Inc.
Cambridge Toyota
Centennial Public School
Conestogo Roofing
Desire2Learn
FaithLife Financial
Financial Planning Student Association -
Conestoga College
Great West Life
Charles Greb
Roxanne Haid
Heffner Lexus and Heffner Toyota
Industrial & Financial Systems Canada Inc.
Interior Store Display Installations Inc.
Joslin Insurance
Melissa Malleck
Manulife - Water St.
Manulife Financial - King St.
MKS - Mortice Kern Systems Inc.
Moventas
Lori Payne
Ena Pennings
Barbara Schumacher

Stantec Consulting Ltd.
The Gap - Fairview Park Mall
Toyota
Tri-Cities Church of Christ
Waterloo Catholic District School Board

Donors between \$100 - \$499

2nd Ayr Brownies
Activa Group
ADESA
AMEC Earth and Environmental
Anonymous
Pat Aplevich
ARCA Financial Group Inc.
Pamela Barker
Carrie Baumken
Cormier and Beaton Families
Jeff Belanger
Martin Bell
Steven Bellingham
Bend All Automotive Inc.
Deanne Bingleman
Cheryl Boyes
Michael Bragg
Jennifer Braid
Anthony Brenner
Brighthouse Branding Group
Steve Brown
Wendy Brumfitt
Cheryl Buehler
Susan Canning
Laura Carmichael
CH2M Hill Canada
Christie Digital Systems
CIBC - Ottawa St. N.
CIBC - Lincoln Rd.
Clifford Evans Training Centre
Samer Cobra
Pamela Comens
Communitech Technology Association
Conestoga College
Tara Connors
Dave Courtney
Colleen Cox
Crawford Adjusters
Lindsay Crickmay
Leslie Dajko
DALSA Inc.
Jessie Davis
Charles Dawson
Delta Kitchener
Dennis Desaulniers
Fatima DeSous
John Dippell
Marilyn Dippell
Corinne Dixon
Karen Dobson
Dr. Janet Speight
Harry Drews
Cheryl Duguid
Trudy Dunn
Economical Insurance
The Economical Insurance Group
EGS Easy Heat Limited
Mary Embro
Becky Faist
Family & Children's Services of the
Waterloo Region
Fastenal Cambridge
Fedex Ground
Chris Ferguson
Nicole Ferris
Donna Finch
John Fioretti
Folio Instruments Inc.
Gary Fonseca
Randy Fowlie
Frontline Corporate Communications Inc.
Chantal Frost
Liz Fryer
Jim Furber
Future Shop
Patricia Giesbrecht
Giffen Lee LLP
Ian Gilchrist
Lindsey Gingrich

Rui Goncalves
Liza Goodfellow
Grand River Hospital Freeport
Graybar Electric (Ontario) Limited
Amy Greer
Alison Greulich
Hadland/Dougan
Keith Harrison
Hawks Minor Bantam "A" Hockey Team
Pat Henderson
Kim Henry
Marilyn Henry
Henry Walser Funeral Home Ltd.
Cheryl Herbst
Sharon Holman
David Horman
Jillian Hubick
John Hull
Sheila Hull
Barry Hunt
Janess Hunt
Heather Jeffery
Christopher Jensen
Mary Johnson
Karen Juneck
Kam Animal Services
Kerry Kanold
Jennifer Kennedy
Bill Kiel
Corey Kimpson
Ann King
Kitchener Junior Rangers Bantam AA
Kitchener Public Library
Sandra Kube
K-W Skating Club
Fatima Kybartas
Lanark Place
Amy Lanfranconi
Launcelot Enterprises
LCBO - Franklin Blvd.
LCBO - Columbia St. W.
Diane Leal
Brian Lipskie

"Unfortunately, for these youth, the traditional Christmas dinner with family and presents just isn't possible," says Tara. "The real magic for these kids needs to be supplied by us."

And that's exactly the message Tara sent out to the community during the 14th annual Tree of Hope Radiothon. And the community stepped up to the challenge! Over thirty-two groups and individuals called in to sponsor a youth. One group listening was the employees of Altanic Transportation.

Santa's elves—also known as the employees of Altanic Transportation—decided to make a difference this past holiday season by spreading joy to less fortunate families in our community in honour of their boss—Chris. Thanks to their generosity, two families in emergency need in Cambridge woke up Christmas morning to a tree laden with gifts and a special treat on the table.

"For years now, our employees at Altanic Transportation would voluntarily donate money at Christmas time to purchase gifts for their boss," says Altanic's Louise Dyne. "One year it was suggested that instead of buying lots of gifts, that we would buy him one gift from the staff and perhaps help the less fortunate. After becoming involved with the FCS through Norm Casarin and Candi Harrington, we learned that FCS does many wonderful things for local children and families. We were then involved with FCS as a sponsor and staff thought perhaps it would be nice to help their struggling families at Christmas time through the Adopt A Family program. The pay off... the thank you cards we received after Christmas from the two families we were able to help."

On behalf of the families who have been given the chance to share the spirit of the season – *thank you!*



Ted Loveday
Lund and Associates
Kathryn MacGregor
Jeff MacIntyre
Elisabeth Magee
Mantynen
Maplesoft
Rob Maurice
Cathy McDonald
Karen McLaughlin
Janice Mitchell
Mitagraphics
Julie Montgomery
Wayne Moore
Sue Morell
Patti Moses
Municipal Property Assessment Corporation
Jeff Murphy
Marcy Nagel
Jeff Nagy
National Bank of Canada
NHD Group Limited
Nancy Norman
Novo Steel
Laura Nutter
Old Navy - Pinebush Rd.
Old Navy - Ottawa St.
Ontario Disability Support Services
OPSEU Local 285
Ottawa Heritage Dental
Paul Davis Systems
Petker & Associates
Gary Petker
Sheryl Petricevic
Amanda Phair
Tess Pitre
Lindsay Pivo
Tracy Potter
Princess Auto
Programme Source
Paul Proudfoot
Puim's

Frieda Purvis
Sarah Quigley
William Radtke
Charmaine Ramkalowan
Hollie Rou
Real Canadian Superstore
REAP Rewards Marketing Solutions
Red Hat Society Cherries Jubilee
Fred Reid
Cynthia Reimann
Ron Repke
Reuter Benefits Inc.
Robert Half Canada Inc.
Lumino Rodrigues
Rogers Communications
Bethany Roland
Michelle Rolson
Paula Ross
Lori Roter
Fiona Roth
Olive Roth
Royal Bank of Canada
Bob Rushby
Bonnie Sanche
Anne Schlorff
Jennifer Schmidt
Troy Schmidt
Vicky Selmayer
Frank Sharpe
Catherine Shaver
Silverheights Public School
Rick Skehan
Southern Cruisers Riding Club #270
Janet Speight
Lyn Spiewak
St. Jacobs Day Care
St. Matthew's On The Hill
State Farm Insurance Co.
Lesley Stallery
Marissa Strban
Janet Strickland
Kathy Sutton
T. Weber Co. Ltd.

Tait, McDonald
Ingrid Taylor
TD Canada Trust - Holiday Inn Dr.
TD Canada Trust - Strasburg Rd.
The Baters
The Real Estate Book
The Schneller Street Gang
Theatre & Company
Toyota Motor Manufacturing Canada Inc.
Transfreight Incorporated
Trans-Logic Executive Search Group
True North Elves
Brenda Tyler
University of Waterloo
Mario Utich
Value Village
Jack Van Grootel
Richard VanLaan
Dale VanLooyen
Chris Venter
John Voin
Waterloo Ravens Atom AA Girls Hockey Team
Waterloo Regional Police
Waterloo Research and Technology Park
Denise Weber
Jennifer Weber
Nicole Weber
Gillian Wells
Mike Werbowecki
Westheights Public School
Michelle Whittle
Liz Wideman
Wilfrid Laurier University
Wilfrid Laurier University - Dean of Student's Office
Marissa Williamson
Betty Wilson
Nancy Wilson
Woolwich Bantam Rep Hockey Team
Janet Wraight
XCG Consultants Limited
Zonta Club of Cambridge

Donors between \$50 - \$99

Paulo Areios
Ken Bender
Lynn Brohman
Dennis Burkhardt
Cris Causley
Kathy Childerhose
Chris Lawyers
Charlotte Cox
Carol Dietrich
Dan Doneff
Bill Duffy
Rick Fisher
Sherri Flegel
Nancy Forsythe
Joe Galizia
Joanne Galloway
Pauline Gingrich
Heidi Glasgow
Alysse Hastie
Jason Hindle
IFS Industrial & Financial Systems
Ken Ingram-Smith
Linda Janssen
Diane Kloepfer
Roland Knoblauch
Kelly Kreuzweiser
Paul Leveck
Beryl McGuinness
Heather McTavish
Debbie Mitchell
Oak Consulting
Ruth Plauffe
Shirley Quehl
Steve Ross
Dianne Shantz
Christine Simpson
Graeme Stemp-Marlock
Terrace On The Square
Alan Thompkins
Maureen Weaver
Nola Young
Patrick Zirnelt

\$100 - \$499 Cont

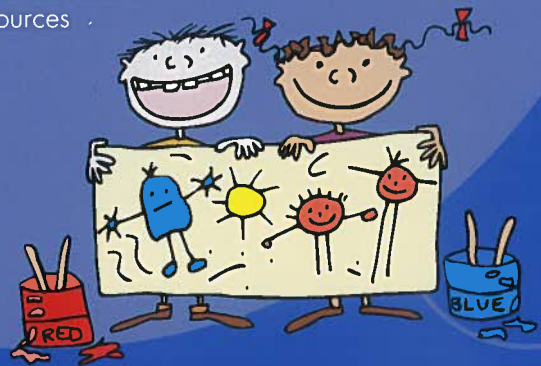
Bob Dempsey
Dennis Murphy Pontiac Buick
Abel Dioz
Douglas Dickenson
Ben Doan
Susanne Dobbin
John W. Donnachie
Drumbo Transport Limited
Donna Durst
Ann Eby
Bev Elder
Stacey Englehart
Ennio's Pasta House
Simon Fairbrother
Family & Children's Services - Social Committee
Helga Ferber
Susan Forler
Molly Fortier
Audrey Fradley
Frank Freda
G. Boehm & Associates Inc.
Karen Gamble
GAP Foundation Money for Time Program
Robert Gehl
Aline Gibeault
Marcel Gingras
Anthony J. Giovinazzo
Gore Mutual Insurance Company
Helen Grainger
Grand River Contracting
Grand River Credit Union
Mae Grealey
Tamara Groff
Marty Groulx
GSP Group
Guillevin International Inc.
H & H Roofing and Sheet Metal Limited
Murray Haase
Simon Hall
Haney, Haney & Kendall
David and Candace Harrington
Nancy Hilliard
Deborah Hoch
Mike Hogan
Eric Hood
Hopewell Children's Homes Inc.
Tom Howard
Donald and Wilma Hunt
Sarah Hunt
Darinka Ilic
Margaret Insley
Stanley Iwan
VIP Jain
Cory Jaklitsch
Joyce Jantzi
Dales Karges
Keller Williams Realty
Kinetite Club of Preston
Kitchener Oktoberfest Lions Club
Kitchener Printing
Kitchener-Waterloo Fastball Promotions Inc.

\$100 - \$499 Cont

Sandi Knowlton
Amanda Kobe
Rick and Janice Kroetsch
Regina H. Kroner (Estote)
Tracey Kropf
Tom Krug
Elizabeth Kumpf
K-W Kinsmen Club, Inc.
Robert Landry
Christine Lang
Joy Lang
Mary-Anne Laroche
Carolyn Laurie
Carol Levis
Lions Club of Cambridge Highlands
Bryan B. Long
Ellen Lovell
Martha-Anne Lunz
Dyan Mitchell
Susan Maciaczyk
Robert Malich
Tom Maloney
Mary Mancuso
Dave Marcella
Kris Marchetti
Larry Margetts
Tom Margetts
Sheila Marsden
Virginia Marshall
David Martin
Matsan, Driscoll & Damico Ltd.
Morgan McCabe
John McCreight
Bob McDonald
David McDonald
Mike McDougall
Patrick McNeil
Janet McPherson
Joanne Meotschek
Leslie Milhausen
Tom Missere
Gordon Mitchell
Montana's Cookhouse Cambridge
Doug Moore
Janice Moore
Shawn Morrison
Patricia Morrissey
Mother Teresa Catholic School
Pam Mounsey
Mr. Pick-Up Waste Disposal Ltd.
Nora Nagy
Mike Neugebauer
New York Fashions
Gail Nichol
Elaine Nicholls
TJ Parkes
Barb Pasqualini
Penlieu Consultants Inc.
Phone Master Services
Shelagh Pigeon
Paul Pink
Jeffrey Poel
William Pol

Foundation Grants

- To create a YOUth Can Run program to encourage youth involved with the agency, to adopt and maintain a healthy lifestyle.
- To develop a trauma intervention framework for children who have been exposed to domestic violence, including a screening tool, assessment tool and treatment program, as well as training to FCS staff and relevant community partners.
- To hire a co-facilitator to lead a couples group, for couples who have been involved with either the agency or the John Howard Society due to issues of domestic violence.
- To support the Annual Youth Services' Christmas Party.
- To hire a summer student to expand the capacity of Volunteer Services to recruit, interview and train volunteers.
- To provide for special emergency assistance for client families on low income, including difficulty in being able to afford counselling services.
- To purchase cooking and baking supplies, craft supplies, sports equipment and supplies, and two internet drops for the Blairview School Program.
- To fund summer camps for child and youth involved with the agency.
- To provide food vouchers and infant supplies for low income families at risk of having a child placed in the agency's care, and to provide bus tickets to adults and children to ensure that they are able to attend appointments.
- To enable the Foster Home Support Program to provide community outings during March Break, summer day camps, and purchase a digital camera.
- To provide a greater variety of community outings relating to intervention workshops.
- To help pay for riding lessons for a youth in care for a period of six months. The youth will also contribute towards the cost.
- To expand a pilot photo project operated jointly by the Langford Treatment Home and the Adolescent Services Team.
- To provide funds for counselling for children who are residing with relatives, returning to live with biological parents after an extended time in foster care, or in the care of relatives.
- To provide families with age-appropriate toys, games and crafts to engage their children in child-centred activities during group access visits.
- Offer a movie day to foster families, including their biological children to recognize the contribution they make to the Agency and their community.
- For a pilot project to provide an introduction to music programs for all children and youth, both in the care of the agency as well as those living with their families.
- To provide youth in care with an opportunity to create lifebooks for themselves by scrap booking with a group of peers. This gives them pages of memories they would not otherwise have.
- To make child care dollars available to enable families to attend agency services and programming, and not be prevented from doing so because of the burden of paying for childcare.
- To pilot an outreach and service delivery approach to newcomer families, identified as needing our services to protect children, through the Bridging Resources Program of K-W Counselling.
- To allow a Crown Ward to continue her interest in modeling by covering the cost of a professional portfolio to support modeling opportunities.



Gifts In Kind

Donors over 15,000

Knights of Columbus,
Waterloo Council 5135

Donors between
\$2,500 - \$4,999

Paul Duncon
Kitchener Rangers Hockey Club
Tradebank Waterloo-Wellington

Donors between
\$1,000 - \$2,499

Rick Bellefeville
Ken Brown
Furniture Direct
KICX FM
K-W Montessori School
Scribbler's Club
Waterloo Siskins Jr. B Hockey Team
We-Create Inc.

Donors between
\$500 - \$999

Adventure Guide
Fairview Park Mall
Hercules Tires
Jiffy Lube
Northbridge Trading Inc.

Unique Screenprinting/
Twin City Trophies

Caroline Willcox

Donors between \$100
- \$499

Anonymous
Bestel Message Centre Ltd.
Boehmers/Cronin Emery
Rena Bruce
Church of God in Christ,
Mennonite Sewing Circle
Maria Di Renzo
Doon Heritage Crossroads
Christine Fergin
Frank Cowan Company Limited
Frank Foreman Youth Memorial
Arts Fund
Golf North
Grand Experiences
Nanci Henderson
Julien Hradecky
M&M Meat Shops
Linda Maltby
Pamela Martindale-Nevin
Molly Maid - Cambridge
Orca Book Publishers

Carol Pearce-Kube
Powerbev Inc.
Rocky Mountain Chocolate Factory
Jodi Spall
St. Peter's Lutheran Church
Christine Taylor
Wildfire Galleries

Donors between
\$50 - \$99

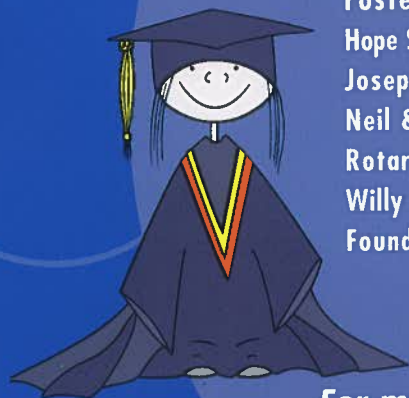
AAA Steam Carpet Cleaning
Blackshop Restaurant & Lounge
Centre In The Square
Draytan Entertainment
Edelweiss Tavern
Forks on the Grand Personal
Chef Services
Galaxy
Candace Harrington
Ann Hummel
National Sports
Newtex Ltd.
Paramount Canada's Wonderland
The Flying Dog - Eatery, Bar, Billiards
Unitron Hearing - Kitchener
Winners/Homesense



Graduating Class of '07

This year the FCS Foundation is pleased to be able to provide an outstanding eighteen scholarships to our youth. The youth who will receive scholarships at the Annual General Meeting in June are:

Fostering Futures Scholarship - Chris D., Sheena F., Amber H. & Huy N.
Hope Scholarship presented by HL Staebler Insurance - Janine S.
Joseph B. LeClerc Memorial Scholarship - Michael H.
Neil & Sharon Parkinson Family Scholarship - Doug M.
Rotary Club of Kitchener-Westmount Scholarship - Sara L.
Willy C. James Scholarship presented by Cardinal Counselling & Mediation - Dan H.
Foundation Scholarships - Jamie B., Abbie G., Chante G., Christy G.,
Catherine H., Jennifer K., Matt M., Jennifer P., Lisa Y.



For more information about how to make a gift to our general
Scholarship Fund, or a named scholarship, contact Candace Harrington,
Supervisor of Fundraising & Communications at

519-576-1329 ext. 3145 or
candi.harrington@facswaterloo.org



\$100 - \$499 Cont

Keith Porter
 Programmed Insurance Brokers inc.
 Denise Quigley
 Karen Quigley-Hobbs
 Phil Randall
 Kim Rau
 Earl Rayner
 Region of Waterloo - Public Health -
 Central Resources Team
 Jeff Reitzel
 Kevin Reitzel
 Penny Reitzel
 Sharon Reitzel
 Kaye Rempel
 Paul Renecker
 Richardson Fire Systems
 Patrick Riegling
 Janet Riehl
 Lynn Ring
 Riverbank Interiors
 Jeanne Robinson
 Debra Rochon
 Chrissy Rodriguez
 Nancy Rogers
 Ron Rogers
 RONA Kitchener
 Stacey Raus
 Peter and Robyn Routly
 Royal Canadian Legion, Fred
 Gies, Branch 50
 Sandy Russell
 Susan Sadowsky
 Maureen Sanderson
 Kevin Schultz

B. Schumm
 Scotiabank
 Alison Scott
 William Seaman
 Scott Shafer
 Susan Shannon
 Lori Shatto
 Jan Sherk
 Lynne Short
 Eric Sigurdson
 Roystan Simon
 Smith & Weisz Poultry
 Veterinary Services
 John Smith
 Sandy Smith
 Linda Snider
 Paul Snider
 Paul Sobiera
 Softcare Innovations Inc.
 SOS Physiotherapy
 Teresa Sousa
 Karen Spencer
 John Spoltore
 Elizabeth Sproule
 St. Anne
 St. Michael's School
 Lavine Steckler
 Margaret Steiner
 Ahren Steinman
 Brigitte F. Staer
 Sun Life Financial
 Barry Symans
 T.T. Sales & Marketing
 Wai-Cheung Tang
 Christine Taylor
 Lynn Taylor

Rick Taylor
 Shelley Taylor
 TD Bank Financial Group
 The Bead Bazaar
 The Optimist Club of New Hamburg
 Inc. - Friend of Youth
 Thomas Cook Travel
 Tireco Canada
 Paul Topp
 Wayne Townsend
 TRH Services
 Brenda Trotter
 Edward Tschirhart
 Leanne Uttley
 Barbara Vanlauwe
 Jennifer Vonstuyvenberg
 Willem Van-Zon
 Mac Voisin
 Dave Wade
 Patricia Walsh
 Chris Walter
 Roxanne Warford
 Waterloo Nissan
 Waterloo Regional Police
 Services
 Leanne Way
 Wessex Precision Machining Ltd.
 Glenn West
 Bob White
 Williams Coffee Pub Fairway
 Maria Willis
 James Wilson
 Fred Wolfe
 Amy Wong
 Mark Woolner
 David Yach

Paul A. Young
 Your Office Source
 Carl J. Zehr
 Zevest Development Corporation
 Ron Zinger
 Rick Zivkovich

*Donors between
 \$50 - \$99*

Glen Adam
 Jamie Adam
 Anonymous (3)
 Christine Aspinall
 Bankside Terrace
 Cameron Beaton
 George Bell
 Douglas Block
 Boehmers/Cronin Emery
 Diane Bogias
 Andy Borland
 Peter Brewer
 Rennie Brudnjak
 Dave Burkhart
 Jane W. Burkhart
 Yo Burley
 Ray Burlm
 Jill Callaghan
 Brian Carson
 Chris Carson
 Parker and Spencer Casey
 Don and Jane Caskenette
 Ron Chantas
 Leslie Christie
 Colleen Cooper
 Dave Dekuyper
 Justin Dilgert

Kevin Dobbie
 Bonnie Domonchuk
 Sue Dunkel
 Gloria Eby
 Grant Erb
 Lauren Eudoxie
 Diano Fedy
 Jean Fretz
 David Gomble
 Gory Gallant General Contracting
 Tracy Glidden
 Grand River Hospital
 Jamie Grah
 Patricia Handorf
 Linda Harman
 Jeannette Hartung
 Monica Heide
 Joe Hemingway
 Sondra Henry
 Peter Hood
 Carol Huber
 Carol Hunsdale-Loh
 Erin Huygens
 Pat Jantzi-Raschke
 Robert Johnson
 Dieter Keilbar
 Clifford Klassen
 Bonnie Klemp
 Kathy Krissak
 KW Optical
 Sherri Lone
 Bill Leeson
 Robert Leith
 Sue Lewis
 June Liddell
 Rhonda Locke
 Carol Long
 Mark Machel
 John MacKenzie
 Denise Maddell
 David Maddling
 Richard McDonald
 Sue McInroy
 Karen Mierau
 Matthew Mills
 Robert Mok
 Dennis Moor
 Gavin Morgan
 MTD Products

Trudy Pavia
 Payne Family
 Udo Petersen
 Violet Phillips
 Fran Pieper
 Edward Piwowarek
 Anna Popa
 Doug Proctor
 Michelle Quenneville
 John Quinnan
 Jacqueline Rashleigh
 Andy Rath
 Jenny Rauchfleisz
 Ernst Rauter
 Nick Rolfe
 Beverly Ruth
 Sherry Setchell
 Patti Shane
 David Silvo
 Pamela Small
 Tim Snell
 Ken Snider
 Cathy Snyder
 Beryl Storke
 Linda Stewart
 Toby Stryewing
 Don Tolson
 Stephanie Turnbull
 Christine Underwood
 Mary Vanderschaaf
 Lisa Vandonk
 Jerald Vanstuyvenberg
 Kees Vanstuyvenberg
 Brad Vanwynsberghe
 Linda Viergge
 Waterloo Region District
 Schaal Board
 Waterloo Region Home
 Builders Association
 Julie Watts
 Janice Weber
 Nathan Weber
 Rosemary Wehrle
 Janice Weiler
 Michelle Wigglesworth
 Wilfrid Laurier University
 Students' Union
 Ted Wilken
 Anne Marie Zanscuyzenberg
 Gail Zinger



In Memory

A memorial gift is a special tribute to a family member or friend. These gifts provide better futures for vulnerable children and youth from the Waterloo Region.

This year memorial gifts were made in memory of:

Norwood Keddy
 Adam Konrath
 Kroner (Estate)
 Creston P. McKee
 Glenn Noble
 M. Reick
 Herman K. Walter

The Foundation

The Foundation is the fundraising arm of Family & Children's Services of the Waterloo Region. We believe that children are our most valuable resource and each child should have the opportunity to meet his or her full potential. As such, our role is to provide the community with the opportunity to enrich the lives of vulnerable children and youth through a wide range of giving opportunities, provide semi-annual grant updates and newsletters, honour and acknowledge the support we receive from so many caring members of our community, and celebrate the heart-warming accomplishments of our children and youth.

The Foundation is supported by a team made up of agency staff, community volunteers, and donors. Our thanks go out to everyone for their part in helping to build a community where all children can grow up being safe, healthy, and loved.



Board of Directors

Rick Purdy, *President*
Brenda Hagey, *Vice President*
Peter Routly, *Treasurer*
Peter Ringrose, *Secretary*
Melissa Howatson
Virginia Marshall
Earl Rayner
Jim Reitzel
Bob Shantz
Rick Skehan

2006 Tree of Hope Chair

Kim Philpot

2006 Children's Ambassadors

Anita Flooman Paterson
James H. Bennett
Kevin McNeil
Margaret Hooper
Murray Haase
Peter Breuer
Rosemary Benbow
Valerie Smith-Sellers

Foundation Staff

James C. Phillips, *Executive Director*
Candace Harrington, *Supervisor,
Fundraising & Communications*

Foundation Office Volunteer

Jeannette Hartung

Adopt a Family Coordinator

Barbara Hull

2006 HotShots Committee Members

Norm Casarin, *CHAIR*
Keren Adderley
Chris Belanger
Jan Bockmaster
Shawn Morrison
Kristin Parkes
Juli-ann Sannuto
Eric Sweet
Carmin Sanichar

And a **BIG THANK YOU** to the many dedicated volunteers who help us with everything from stuffing envelopes, to refereeing games at the Hot Shots Street Hockey Tournament in June. Your support is critical to our success!

To learn more about current Foundation volunteer needs, contact the Foundation at 519-576-0540 or foundation@facswaterloo.org.

Special thank you to TWIN CITY DWYER for generously sponsoring a portion of this publication.

One by One.

...our children are learning to read...
...our youth are rising to the challenge of
post-secondary education....
...our kids are getting the chance to attend
camp or join a sport....
...our children who have experienced sexual
abuse are receiving the support they need
to move past the hurt...
...our little ones are waking up on Christmas
morning with presents under their tree....
...our supporters are making a difference in the
lives of vulnerable children, youth, and families!

...we are building the better
world we wish for.



FCS Foundation Office
300 Ardelt Avenue,
Kitchener, ON N2L 2C9
Phone: 519-576-0540
Fax: 519-570-0160
www.fcsfoundation.ca

family & children's services
of the waterloo region
FOUNDATION
established 1991

Our Registered Charity Number is 885346817RR0001